

A photograph taken from the deck of a sailboat, looking out over a turbulent sea. The boat's wooden deck and rigging are visible in the foreground. The sea is dark blue with white foam from the waves. The sky is overcast with grey clouds. The text is overlaid on the left side of the image.

Skipper Briefing
Vegvisir Race Nyborg
Green & Red Course
Starting Thursday AUG 29
29 - 30 - 31 AUGUST 2024

AGENDA

- 11:50 Welcome by mayor of Nyborg
Kenneth Muhs
- Welcome // Niels Pedersen Nyborg
Sejlforening
- CW or CCW? // Morten Brandt Shorthand
ECM
- Sailing in congested areas // Dorte Olbæk
Hansen VTS Surveillance Unit
- 151 NM distance Race // Morten Brandt
- 238 NM Distance Race
- Weather // Morten Brandt
- Sail Safe!

Clockwise or Counter Clockwise?



238 NM CCW



151 NM CW



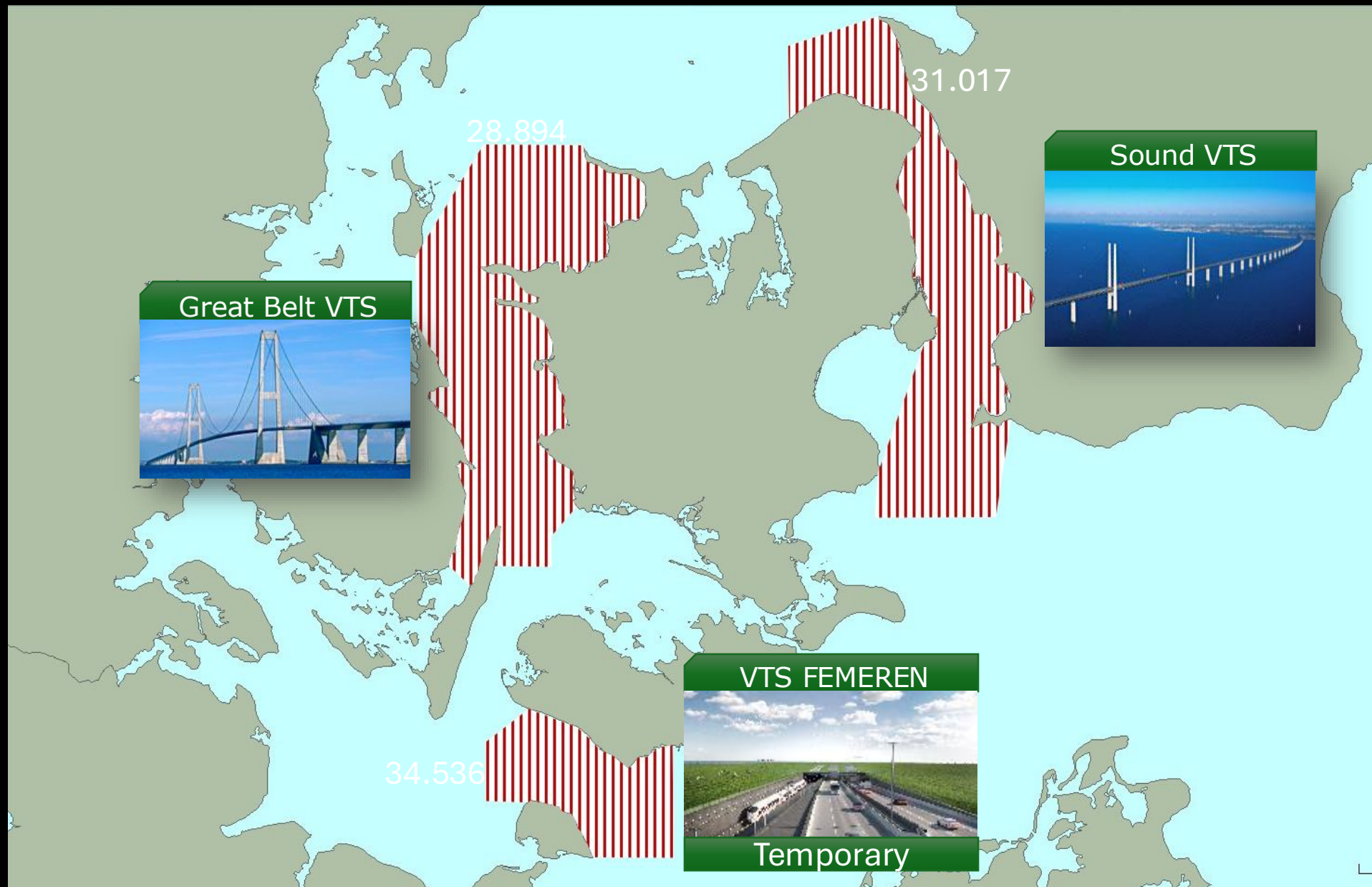


VTS Great Belt



UNCLASSIFIED

VTS coverage



Your challenges during race:

- Crossing of Route T
- TSS Eastern bridge
- West bridge
- Traffic separation zone TSS-T5
- Ferries crossing
- Meeting of Route T & H

BELTREP Operational Area

The map illustrates the BELTREP Operational Area in the Baltic Sea, showing various routes, sectors, and geographical features. The area is bounded by latitudes 5°N to 56°N and longitudes 10°E to 50°E.

Geographical Features and Islands:

- Samsø:** Located in the northern part of the area, with the *Samsø Bælt* (Samsø Belt) to its east.
- Sjælland:** The large island to the east, with *Sjællands Odde* at its northern tip.
- Fyn:** The island to the south, with *Storebælt* (Great Belt) between it and Sjælland.
- Langeland:** A smaller island south of Fyn.

Key Locations and Airports:

- DKKAL:** Kalundborg, Denmark.
- DKNBBG NYBORG:** Nyborg, Denmark.
- DKKRR KORSØR:** Korsør, Denmark.
- DKSTN/DKSTG/DKSIT/DKGfH:** Stigsø, Denmark.
- DKSVE Svendborg:** Svendborg, Denmark.

Routes and Sectors:

- Route I:** A dashed line running north-south through the center of the area.
- Route II:** A dashed line running north-south, parallel to Route I, further east.
- Route III:** A dashed line running north-south, further east.
- Route IV:** A dashed line running north-south, further east.
- Route V:** A dashed line running north-south, further east.
- Route VI:** A dashed line running north-south, further east.
- Route VII:** A dashed line running north-south, further east.
- Route VIII:** A dashed line running north-south, further east.
- Route IX:** A dashed line running north-south, further east.
- Route X:** A dashed line running north-south, further east.
- Route XI:** A dashed line running north-south, further east.
- Route XII:** A dashed line running north-south, further east.
- Route XIII:** A dashed line running north-south, further east.
- Route XIV:** A dashed line running north-south, further east.
- Route XV:** A dashed line running north-south, further east.
- Route XVI:** A dashed line running north-south, further east.
- Route XVII:** A dashed line running north-south, further east.
- Route XVIII:** A dashed line running north-south, further east.
- Route XIX:** A dashed line running north-south, further east.
- Route XX:** A dashed line running north-south, further east.
- Route XXI:** A dashed line running north-south, further east.
- Route XXII:** A dashed line running north-south, further east.
- Route XXIII:** A dashed line running north-south, further east.
- Route XXIV:** A dashed line running north-south, further east.
- Route XXV:** A dashed line running north-south, further east.
- Route XXVI:** A dashed line running north-south, further east.
- Route XXVII:** A dashed line running north-south, further east.
- Route XXVIII:** A dashed line running north-south, further east.
- Route XXIX:** A dashed line running north-south, further east.
- Route XXX:** A dashed line running north-south, further east.

Sectors:

- Sector 1:** Located in the northern part of the area, near Samsø.
- Sector 2:** Located in the central part of the area, near Storebælt.

Other Features:

- REPORT LINE WEST (IRW):** A solid line running north-south on the western side.
- REPORT LINE NORTH (IRN):** A solid line running east-west at the top.
- REPORT LINE SOUTH (IRS):** A solid line running east-west at the bottom.
- REPORT LINE SOUTHWEST (IRSW):** A solid line running north-south on the southwestern side.
- REPORT LINE:** A solid line running north-south in the center.
- REPORT LINE (IRH):** A solid line running north-south, further east.
- REPORT LINE (IRI):** A solid line running north-south, further east.
- REPORT LINE (IRJ):** A solid line running north-south, further east.
- REPORT LINE (IRK):** A solid line running north-south, further east.
- REPORT LINE (IRL):** A solid line running north-south, further east.
- REPORT LINE (IRM):** A solid line running north-south, further east.
- REPORT LINE (IRN):** A solid line running north-south, further east.
- REPORT LINE (IRO):** A solid line running north-south, further east.
- REPORT LINE (IRP):** A solid line running north-south, further east.
- REPORT LINE (IRQ):** A solid line running north-south, further east.
- REPORT LINE (IRR):** A solid line running north-south, further east.
- REPORT LINE (IRS):** A solid line running north-south, further east.
- REPORT LINE (IRT):** A solid line running north-south, further east.
- REPORT LINE (IRU):** A solid line running north-south, further east.
- REPORT LINE (IRV):** A solid line running north-south, further east.
- REPORT LINE (IRW):** A solid line running north-south, further east.
- REPORT LINE (IRX):** A solid line running north-south, further east.
- REPORT LINE (IRY):** A solid line running north-south, further east.
- REPORT LINE (IRZ):** A solid line running north-south, further east.

Coordinates:

- Latitude:** 5°N, 10°N, 15°N, 20°N, 25°N, 30°N, 35°N, 40°N, 45°N, 50°N, 55°N, 56°N.
- Longitude:** 10°E, 20°E, 30°E, 40°E, 50°E.

Scale: 1:100,000

Legend:

- Route I:** Dashed line
- Route II:** Dashed line
- Route III:** Dashed line
- Route IV:** Dashed line
- Route V:** Dashed line
- Route VI:** Dashed line
- Route VII:** Dashed line
- Route VIII:** Dashed line
- Route IX:** Dashed line
- Route X:** Dashed line
- Route XI:** Dashed line
- Route XII:** Dashed line
- Route XIII:** Dashed line
- Route XIV:** Dashed line
- Route XV:** Dashed line
- Route XVI:** Dashed line
- Route XVII:** Dashed line
- Route XVIII:** Dashed line
- Route XIX:** Dashed line
- Route XX:** Dashed line
- Route XXI:** Dashed line
- Route XXII:** Dashed line
- Route XXIII:** Dashed line
- Route XXIV:** Dashed line
- Route XXV:** Dashed line
- Route XXVI:** Dashed line
- Route XXVII:** Dashed line
- Route XXVIII:** Dashed line
- Route XXIX:** Dashed line
- Route XXX:** Dashed line
- Sector 1:** Shaded area
- Sector 2:** Shaded area
- REPORT LINE WEST (IRW):** Solid line
- REPORT LINE NORTH (IRN):** Solid line
- REPORT LINE SOUTH (IRS):** Solid line
- REPORT LINE SOUTHWEST (IRSW):** Solid line
- REPORT LINE:** Solid line
- REPORT LINE (IRH):** Solid line
- REPORT LINE (IRI):** Solid line
- REPORT LINE (IRJ):** Solid line
- REPORT LINE (IRK):** Solid line
- REPORT LINE (IRL):** Solid line
- REPORT LINE (IRM):** Solid line
- REPORT LINE (IRN):** Solid line
- REPORT LINE (IRO):** Solid line
- REPORT LINE (IRP):** Solid line
- REPORT LINE (IRQ):** Solid line
- REPORT LINE (IRR):** Solid line
- REPORT LINE (IRS):** Solid line
- REPORT LINE (IRT):** Solid line
- REPORT LINE (IRU):** Solid line
- REPORT LINE (IRV):** Solid line
- REPORT LINE (IRW):** Solid line
- REPORT LINE (IRX):** Solid line
- REPORT LINE (IRY):** Solid line
- REPORT LINE (IRZ):** Solid line

Geodestavrelsen

DISTRESS

- In case of **DISTRESS** – do whatever necessary to save yourself, (your crew) – and your vessel.
- "Emergency overrules everything"
- VTS Great Belt will assist by request from LYRA

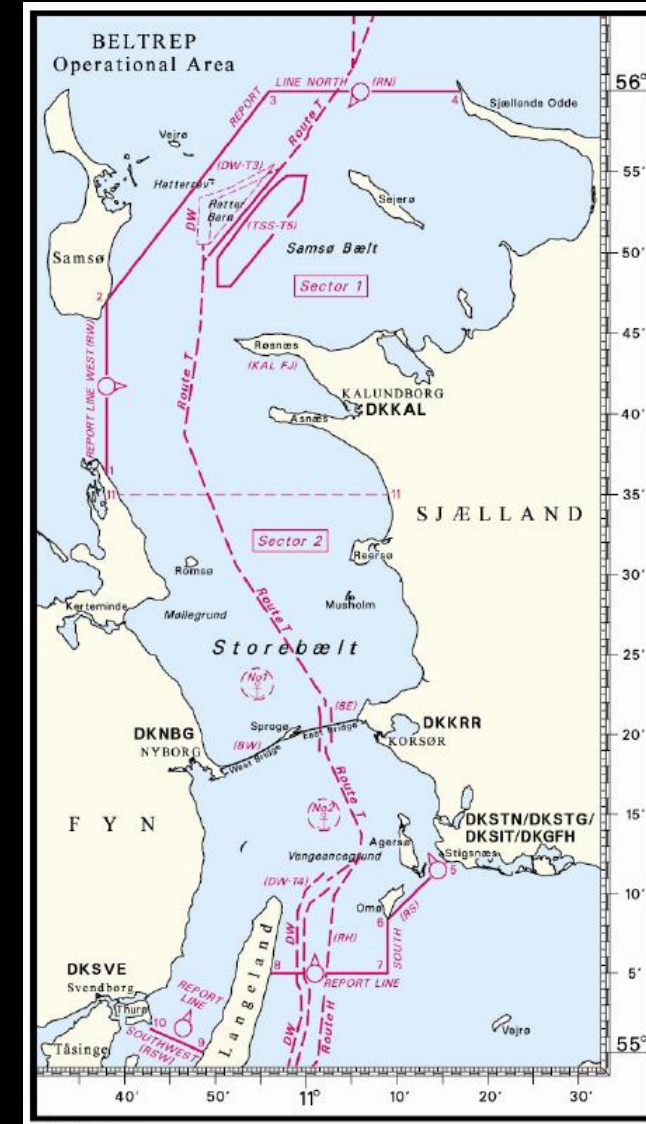
Crossing of Route T

- Be aware of vessels in Route T at any time when crossing.

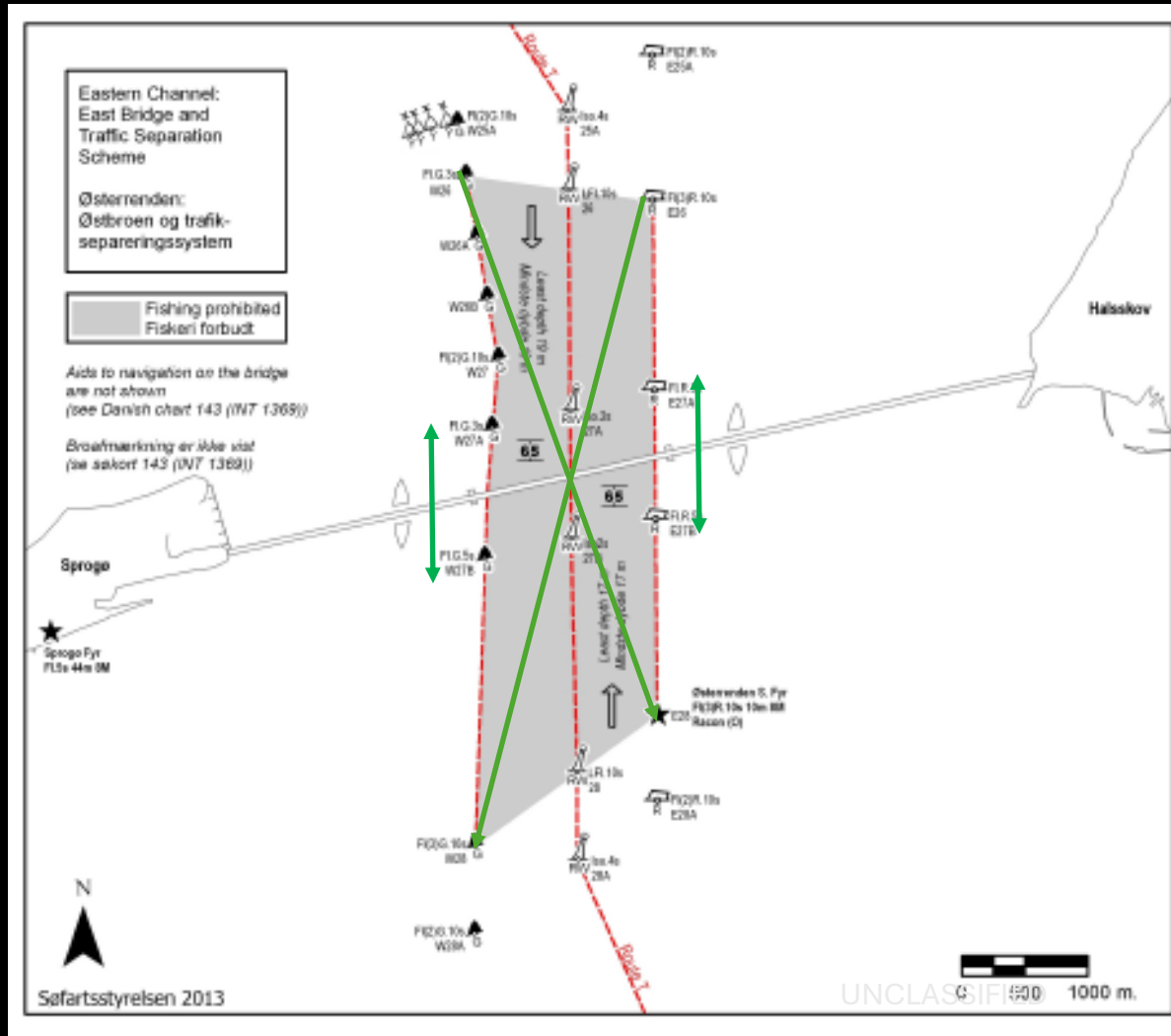
Vessels with a draught of up till 15-16 meters and a length of up till 400meters.

- If you are less than 1 NM to their bow – you are almost invisible (“depending”)

UNCLASSIFIED

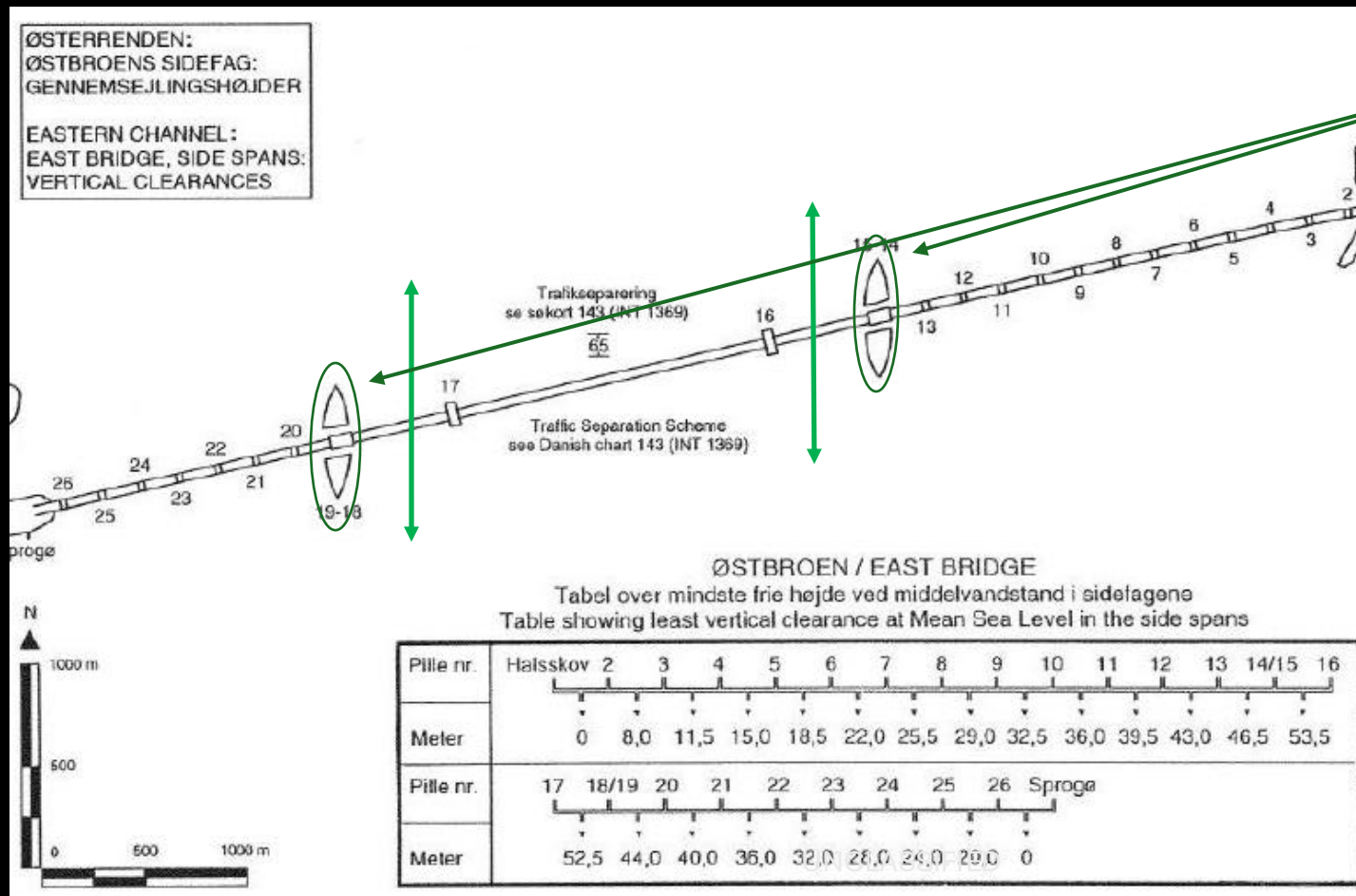


TSS East bridge



- No boats in TSS unless distress
- Passage between pylon and anchor block OR closer to land
- (Never – ever – opposite direction)

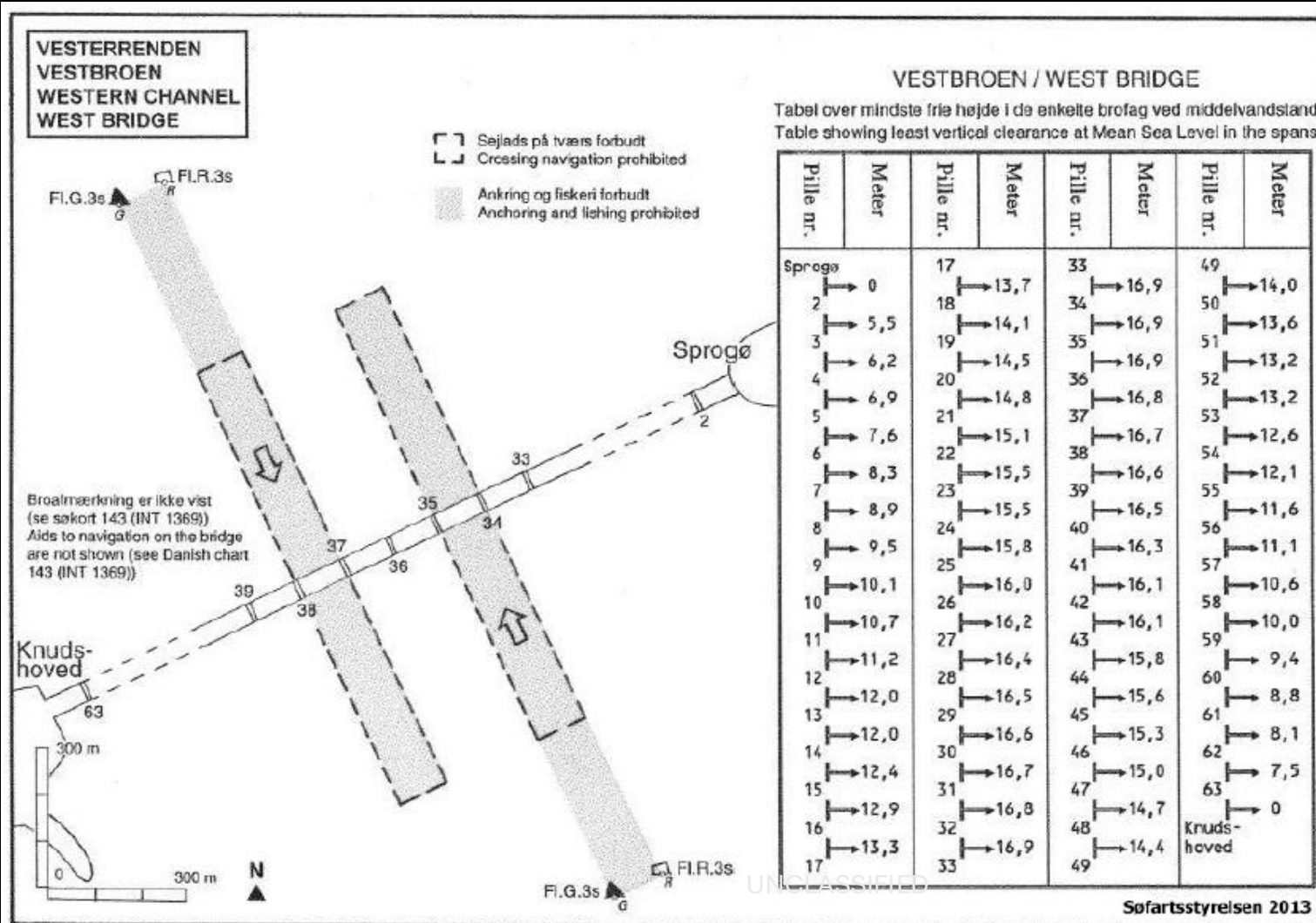
TSS East bridge



- Small protection islands

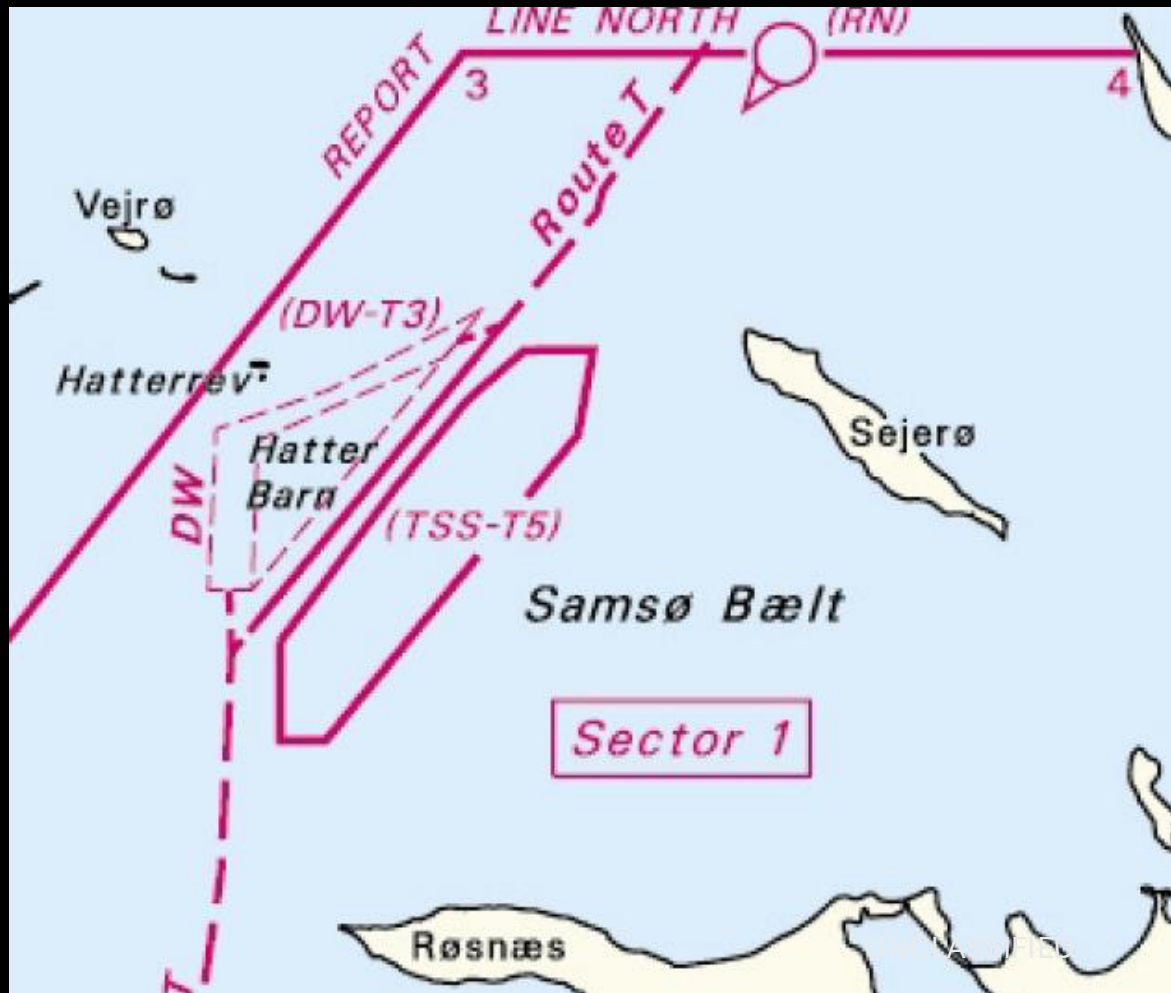
- Check water depth before passing other side spans

West bridge



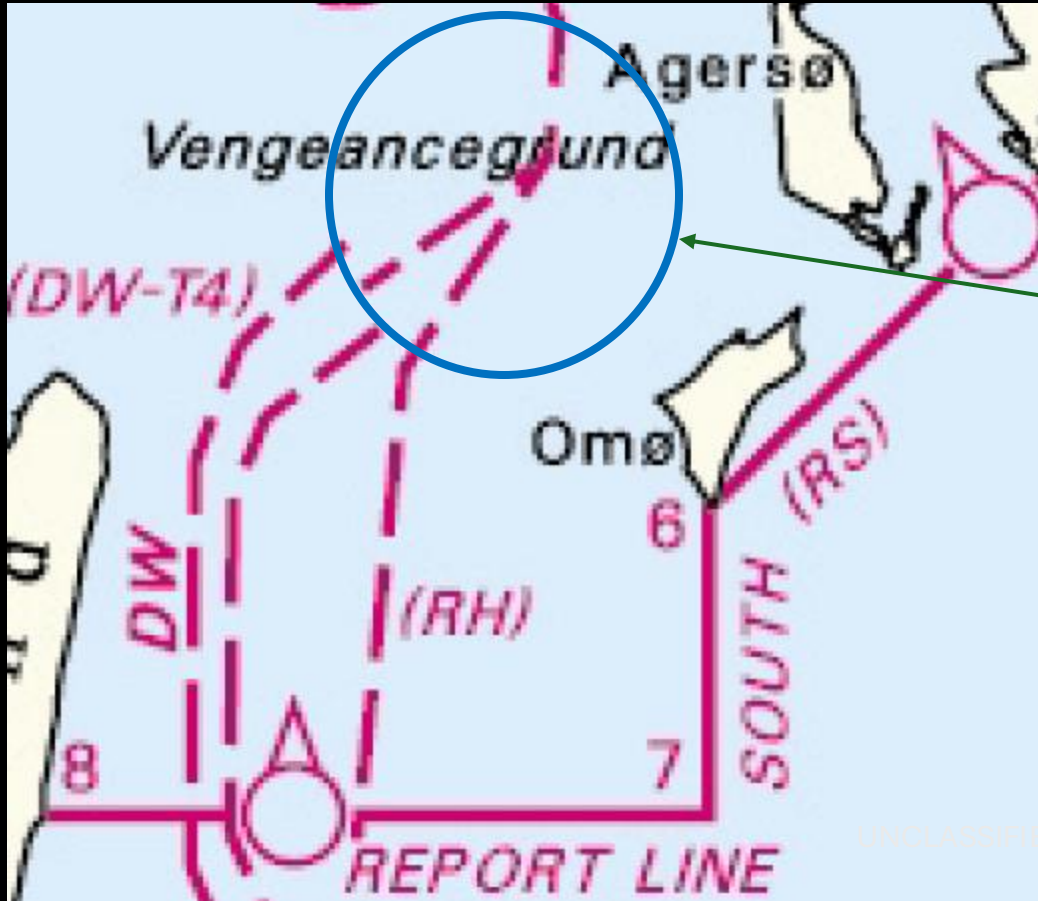
- Respect 500m & direction (if using main lanes)

TSS Hatter



- Most interesting for **RED** Course
- Do **NOT** enter Traffic separation zone unless **distress**
- Do not use the TSS & DW
- Røsnæs to Sejerø
- Beware of high speed ferries (Sj.Odde)

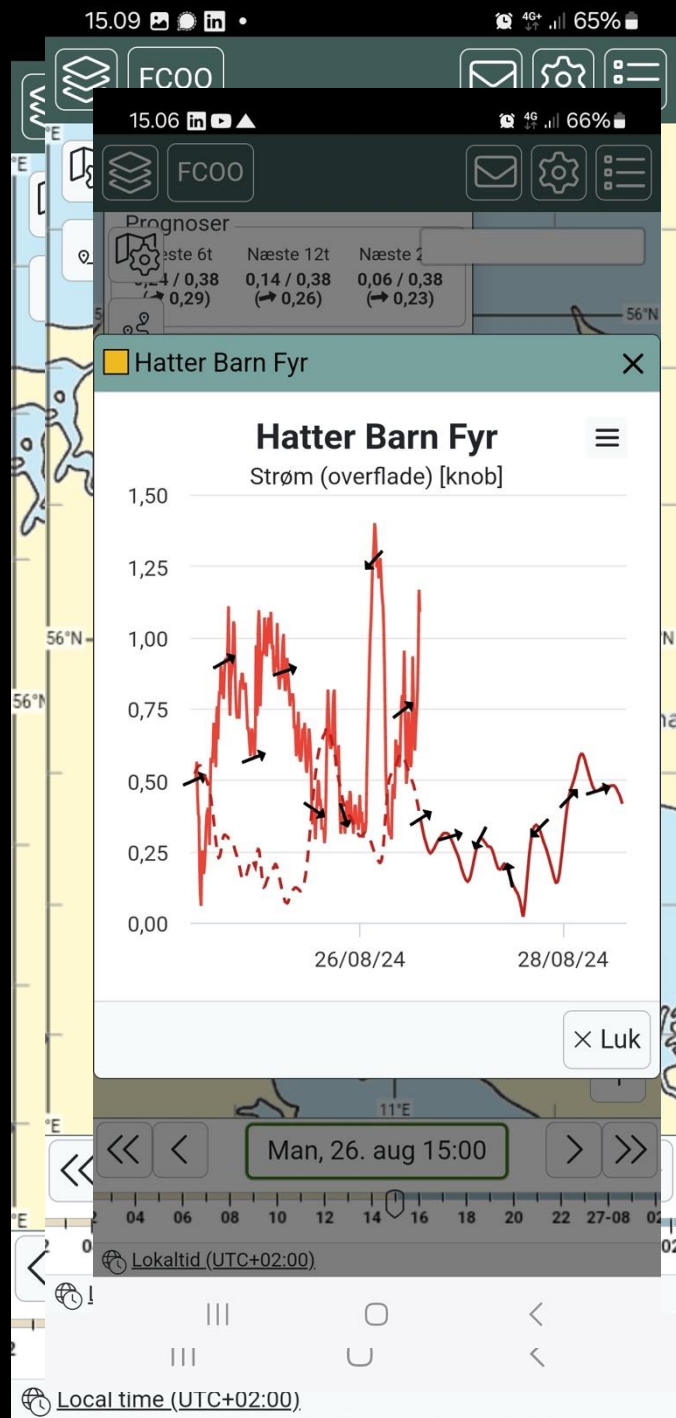
Others



- Ferries crossing (Agersø & Omø to/from Stignæs)
- Meeting of Route T & H

VTs area

- Information about current
- Past 6h – 12h – 24h
- Present
- Predicted 6h – 12h – 24h
- www.sejladsudsigt.dk (web) or download the app – only android)



- Click on Denmark
 - Click on the wheel (Settings)
 - Choose language
 - Click on layers
 - Click on measurements
 - Click on current
 - Choose the position you want.
-
- (I'll stay in the area afterwards if you want assistance to the app.)

VTs area

- You DO NOT have to call VTs Great Belt
- VTs Great Belt will be in contact with the Race master (If problems occur)

If in **DISTRSS** – follow procedures stated by the Race master

- VTs are obliged to report any vessel which breaks the rules to DMA.

Thank you for your attention



UNCLASSIFIED

EYE IN THE SKY

Do you feel watched?



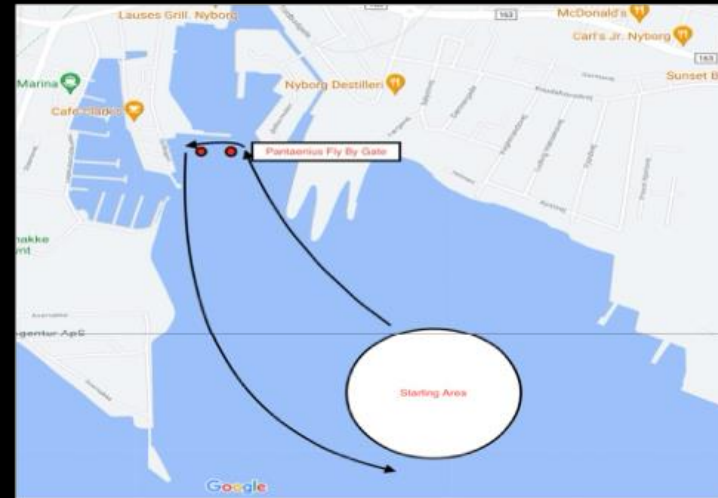
....Then you are right!

151 NM Green Course



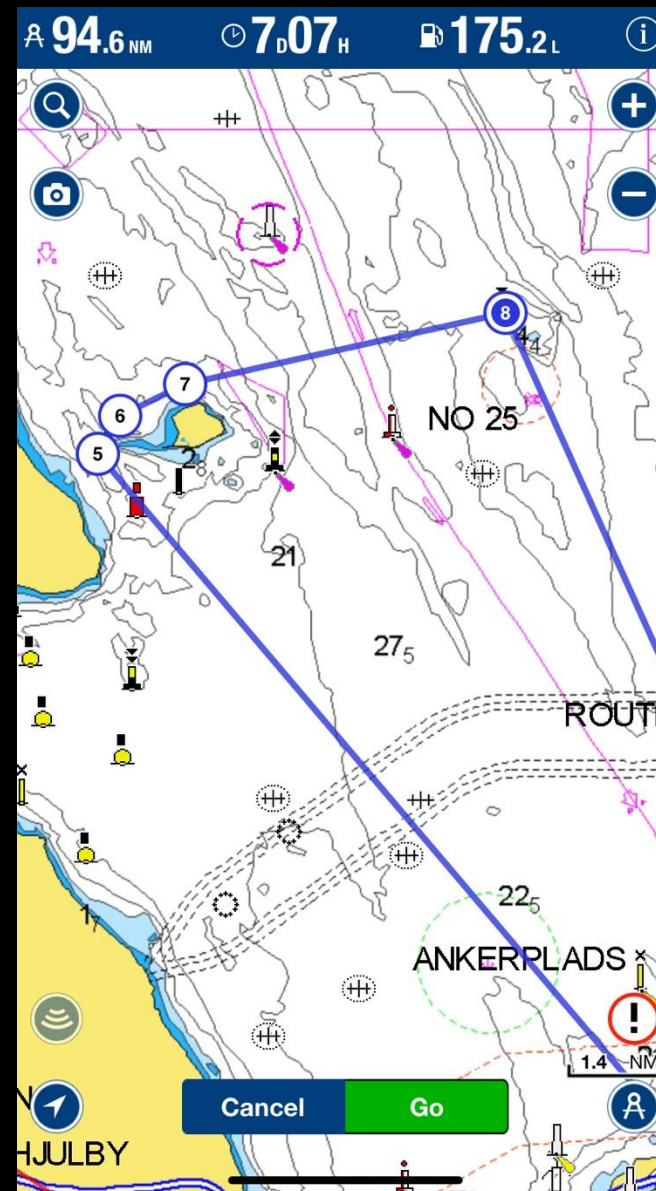
Key Points

Appendix B

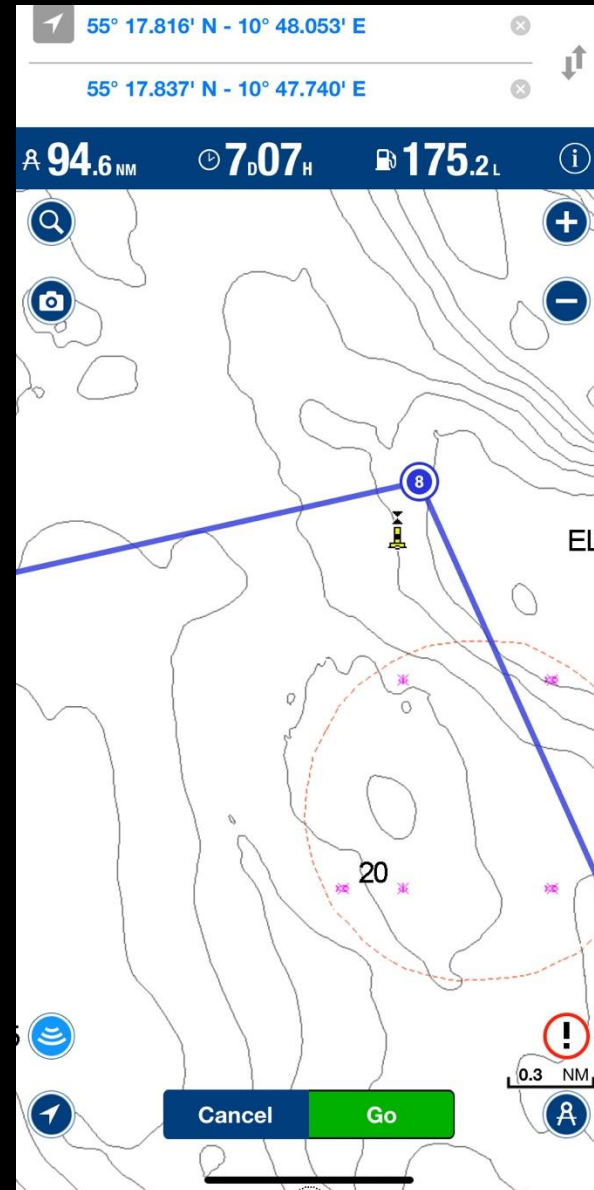


The starting area is approximately 1.5 km south of Nyborg.

Key Points



Key Points Cardinal Buoy for crossing Route T



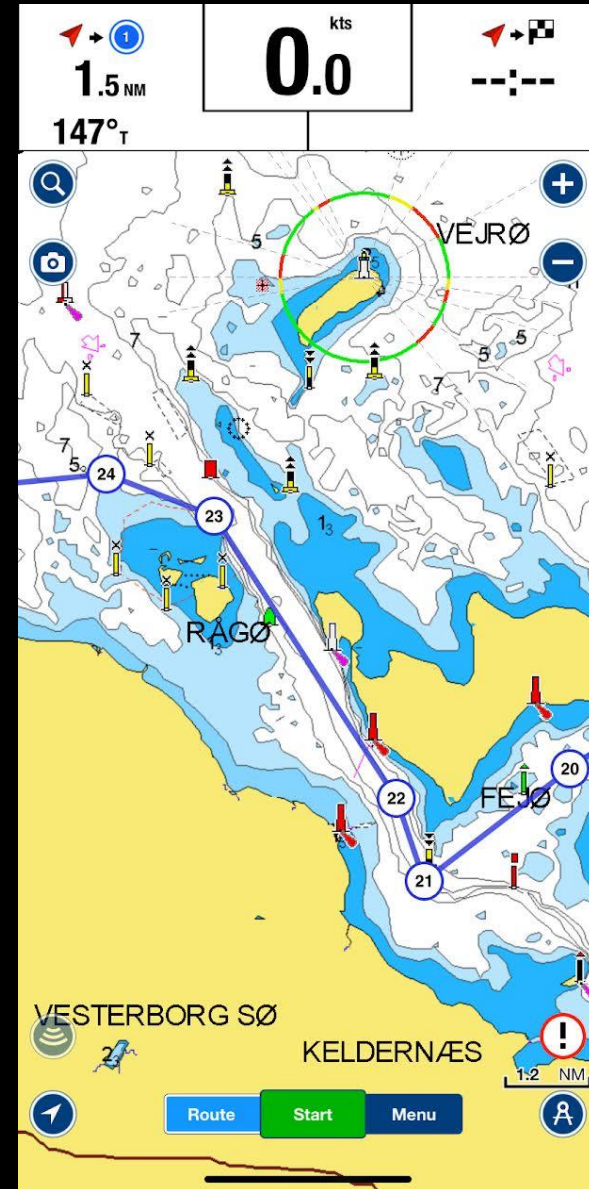
Key Points Exclusion Zone Bridge

NORTHERN POINT:
55 25 306N - 10 58 493E

Southern Point
55 16 946N - 11 3724E

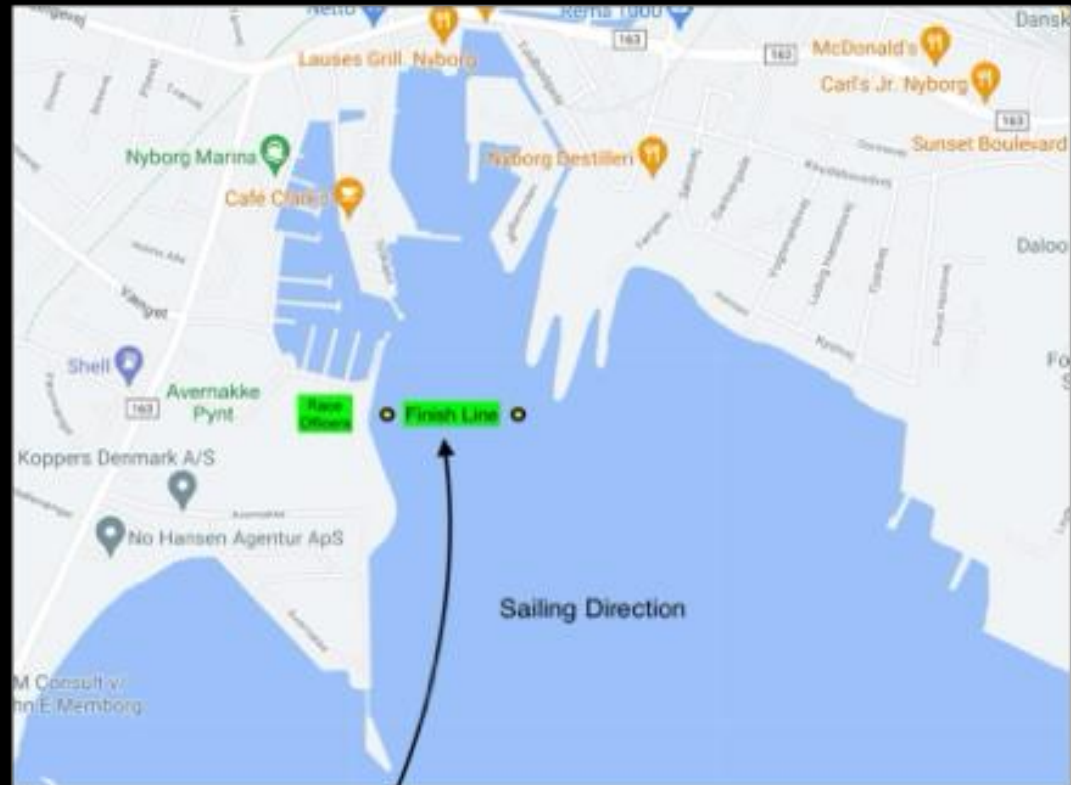


Key Points Stay in the Fairways



Key Points

Appendix 4



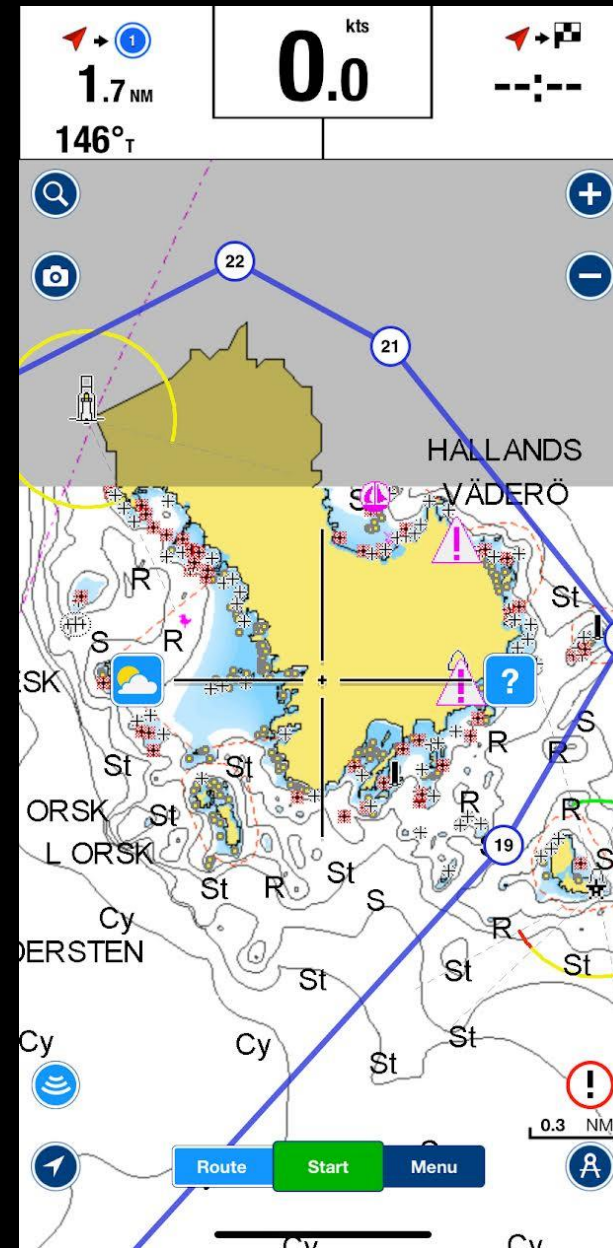
238 NM Red Course



Key Points Exclusion Zone



Key Point
Stay away
from Rocks



Weater Please use the local Sailing Weather

- www.fc00.dk